

# ArcGIS FOR MINERS AND MINERAL EXPLORATIONISTS

The course covers the following topics

XPL  
LORE.  
GLO  
BAL

GIS in the Mining and Mineral Exploration Sector  
Datasets and Formats used in Mining and Mineral Exploration  
Coordinate Systems and Georeferencing  
Geodatabases: Principles & Management  
Creating and Editing Data  
Symbology and Visualisation  
Cartography  
Spatial Analysis & Interpretation  
Interpolation & Contouring  
Model Builder  
Mineral Potential Mapping  
Client data examination & troubleshooting

5-days course

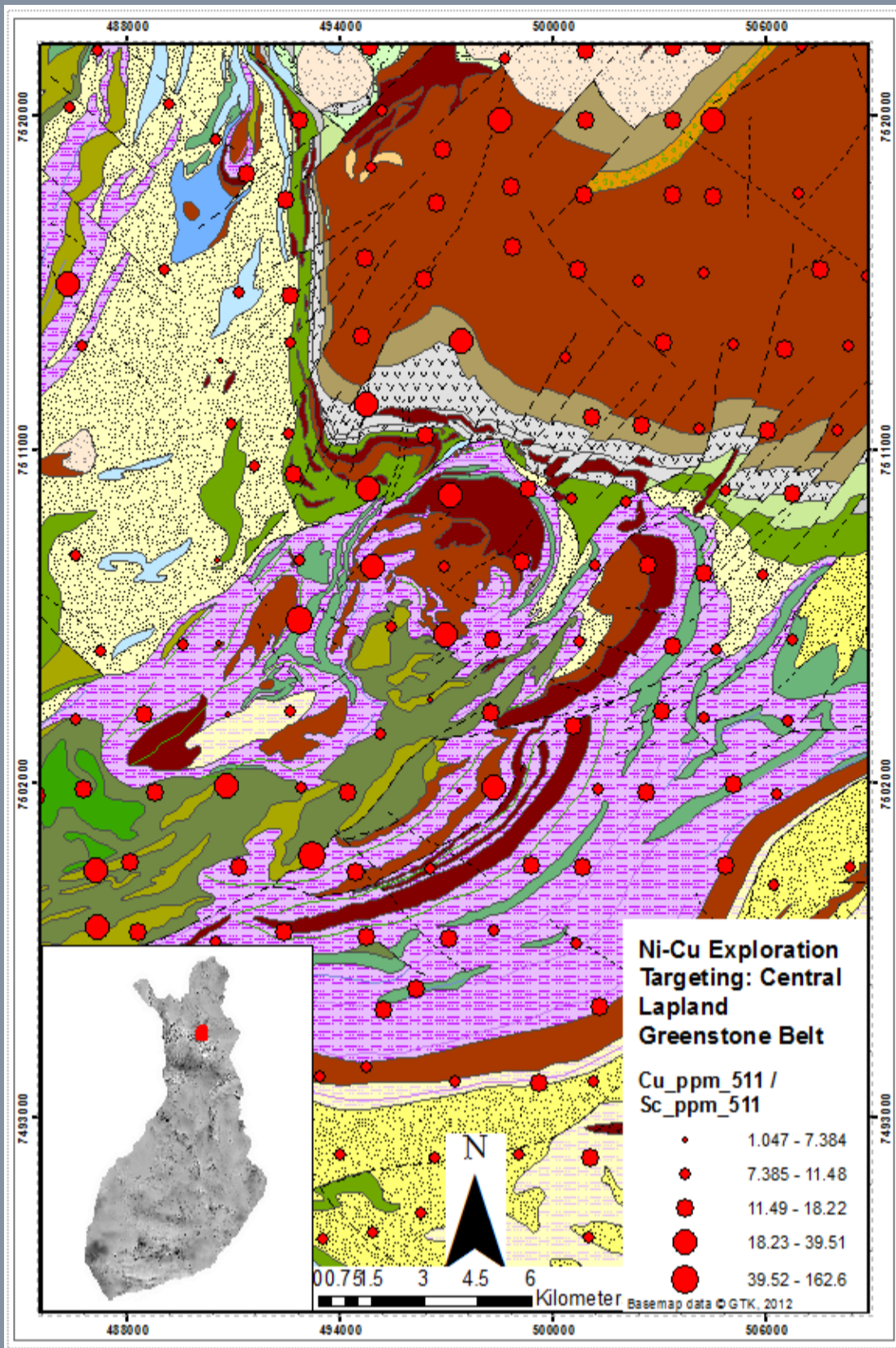
- Exploration and Mining Geoscientists
- Geological Survey Geologists
- Academics and Graduates in Geoscience
- GIS personnel working in Mining
- Land Surveyors

Recommended audience



Contact: [info@xplore.global](mailto:info@xplore.global)

Website: [www.xplore.global](http://www.xplore.global)



The 5-days course ArcGIS for Miners and Mineral Explorationists will equip you with essential workflows and the knowledge required to aid efficient exploration targeting and resource development programmes. World-class geoscientific data from Finland will be utilised in conjunction with proprietary data to discuss international best practice methods of data acquisition, manipulation, cartography & visualisation, advanced spatial analysis and mineral potential mapping.

The course builds upon the in-depth experience of passionate industry exploration geologists. Many years of boots-on-the-ground experience resulted in drawing together and making accessible the most relevant workflows used in the mining and exploration sector.

